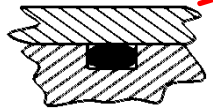




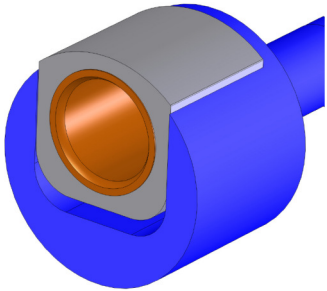
"C" TRIPLE AND DOUBLE BODY PUMPS SERIES— HIGH FLOWRATE



HIGH CAPACITY BYPASS VALVE

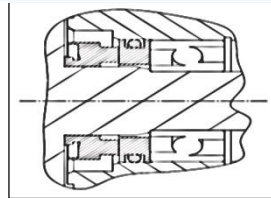


ORINGS SEALED BODIES

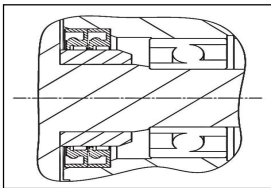


GUIDED IMPELLER BEARING SYSTEM

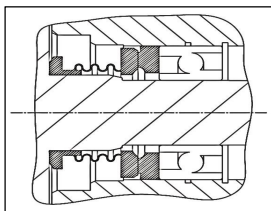
AVAILABLE INTERNAL SEALS:



MECHANICAL SEAL



DOUBLE VITON OR PTFE RING SEAL



BELLOW WIDIA SEAL

PUMP – GEARBOX SPLIT CONSTRUCTION:
-EASY MAINTENANCE
-NO GEARBOX OIL / PUMPED LIQUID CONTAMINATION RISK

AVAILABLE:
ATEX ELECTRIC MOTOR
DOUBLE SPEED MOTOR
INVERTER SPEED VARIATOR

GEARBOX WITH INSPECTION COVER:
-EASY AND QUICK PUMP MAINTENANCE

ISO UNI PN10 FITTINGS

